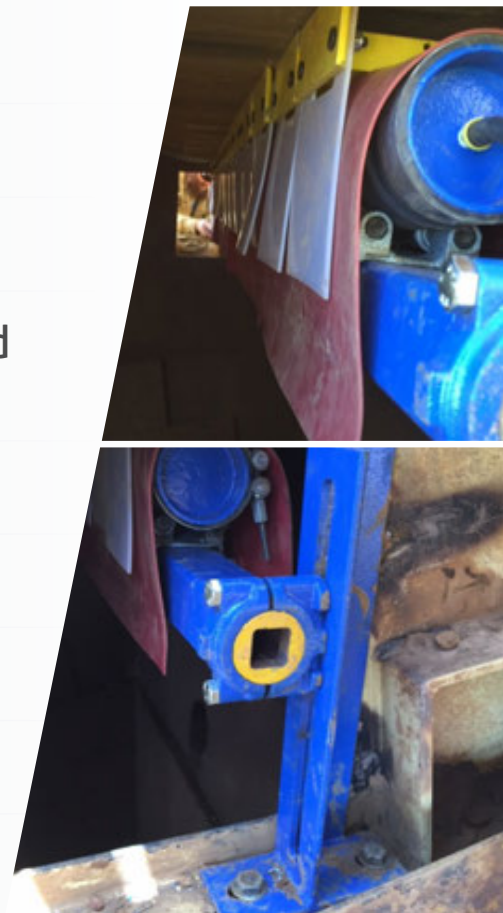




DirtWhacker Conveyor Belt Cleaning System

The DirtWhacker conveyor belt cleaner systems are recognized worldwide for their effectiveness, durability and for their belt-friendliness.

- ✔ Extended conveyor belt life
- ✔ Constant blade to belt pressure
- ✔ Blades operate independently
- ✔ Constant blade angle of 90° due to patented parallelogram design
- ✔ Lower maintenance
- ✔ Longer blade life
- ✔ Less carry back
- ✔ Cleaner working environment
- ✔ Less down time



Get in Touch

Annexus WA
Unit 3/68 Callaway Street
Wangara WA 6065, Australia

Phone +61 (08) 9302 2576
Mobile +61 (0) 408 607 465
E-mail solutions@annexuswa.com



www.annexuswa.com
www.dirtwhacker.com.au



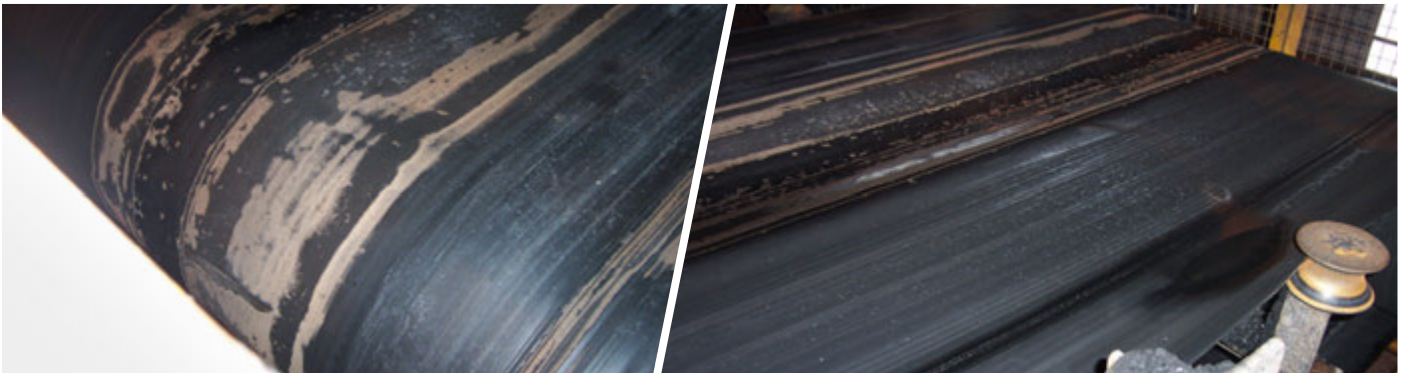
annexus_wa

A Comparative Trial

The DirtWhacker vs a Conventional Belt Scraper

In a coal application, the DirtWhacker Belt Cleaner was installed in a trial situation against a conventional spring-loaded belt cleaner. After 9 months, the belt with the conventional scraper required replacement whereas the belt with the DirtWhacker belt cleaner lasted another 9 months. The reason for this dramatic difference is that the DirtWhacker removed a lot more of the coal from the belt, with less abrasive material passing over the blade and hence less abrasion on the belt. The big cost saving in this case was the replacement cost of the belt.

Conventional Scraper Belt



DirtWhacker Scraper Belt



Annexus WA
Unit 3/68 Callaway Street
Wangara WA 6065, Australia

Phone +61 (08) 9302 2576
Mobile +61 (0) 408 607 465
E-mail solutions@annexuswa.com



www.annexuswa.com
www.dirtwhacker.com.au